

# Office to let

## Dem Dobrescu Offices

Bucharest, Sector 1, 5 Dem Dobrescu St.

### Building information

Building status	Existing
Year of construction	2004
Parking ratio	To be agreed
Total building area	900 sq m

### Commercial terms

Office space*	after login *
Parking	after login *
Service charge*	after login *
Minimum lease term	after login *
Availability	after login *

\* Asking terms for m<sup>2</sup>/month

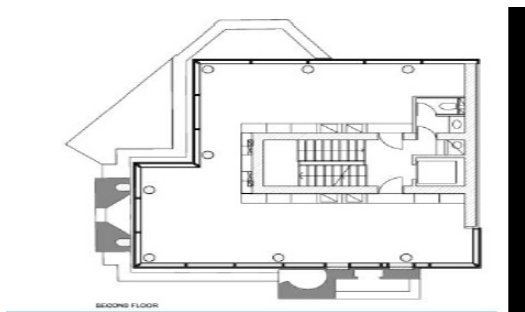
### Location



### Available space

Building completely leased

## Typical floor plan



## Public transport

Metro: M2

Bus: 226,300

Contact



+40 21 302 3400

More information